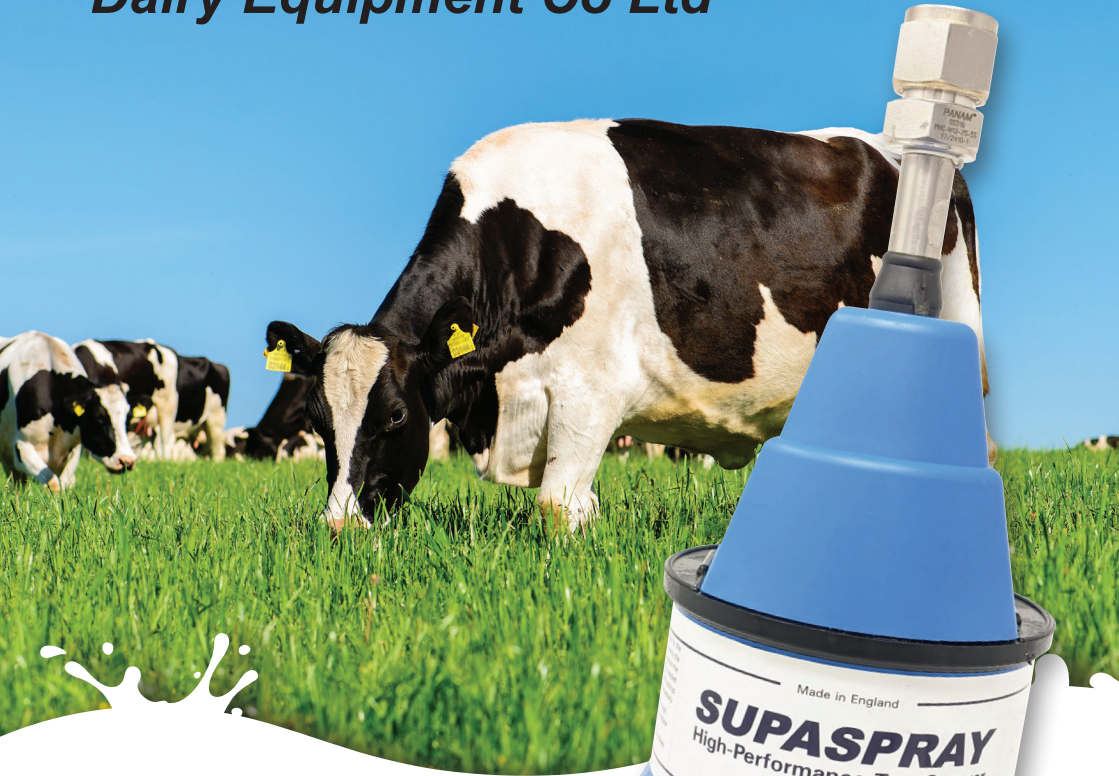


# **COTSWOLD**

*Dairy Equipment Co Ltd*



## **SUPASPRAY**



Teat spraying system

# SUPASPRAY

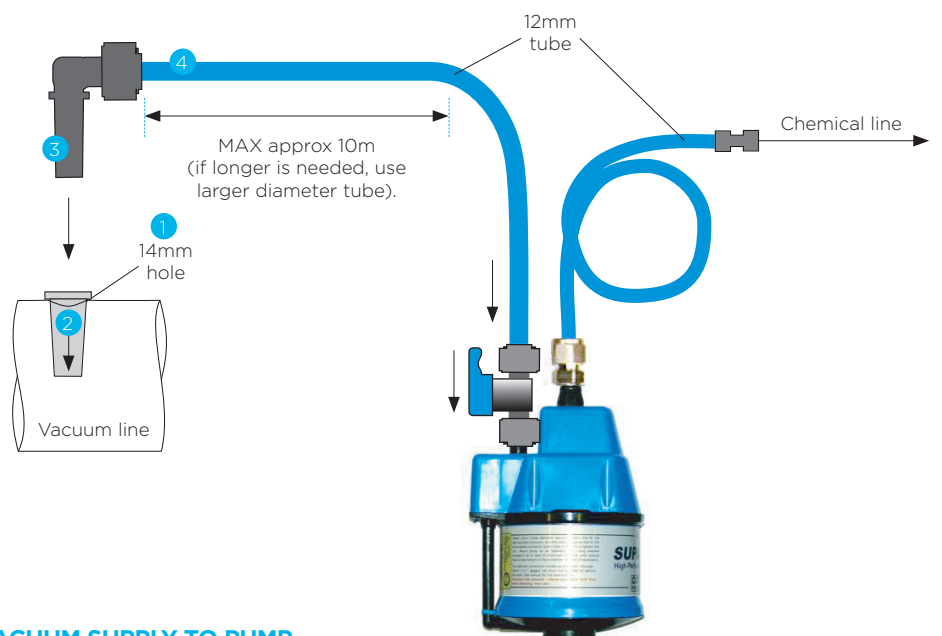
Teat spraying system

	Part no.	Supaspray pump only	VS303 3 gun system	VS304 4 gun system	VS305 5 gun system	VS306 6 gun system	VS307 7 gun system	VS308 8 gun system	VS309 9 gun system	VS3010 10 gun system
Supa pump with 12mm chemical tube	<b>Supaspray</b>	1	1	1	1	1	1	1	1	1
Bottom hose and foot filter	<b>SUP11</b>	1	1	1	1	1	1	1	1	1
Suapspray mounting bracket	<b>VS501</b>	1	1	1	1	1	1	1	1	1
Rawl plugs	<b>386-117B</b>	2	2	2	2	2	2	2	2	2
Wall screws	<b>386-117</b>	2	2	2	2	2	2	2	2	2
Hose dip	<b>CF63</b>	1	1	1	1	1	1	1	1	1
Grommet sleeve vacuum line	<b>390-302</b>	1	1	1	1	1	1	1	1	1
Elbow 12mm stem x 12mm push-fit	<b>350-319F</b>	1	1	1	1	1	1	1	1	1
Connector 12mm x 12mm push-fit	<b>350-317F</b>	1	1	1	1	1	1	1	1	1
Connector 8mm x 12mm push-fit	<b>350-120F</b>	1	4	5	6	7	8	9	10	11
Tap 12mm x 12mm push-fit	<b>350-315F</b>	1	2	2	2	2	2	2	2	2
Cable ties 300mm natural (1000)	<b>VS/22</b>	10	30	35	40	45	50	55	60	65
Tube 9mm x 12mm x 10m	<b>VS/21C</b>	1	0	0	0	0	0	0	1	1
Tube 9mm x 12mm x 40m	<b>350-109</b>		1	1	1	1	1	1	2	2
Tee 12mm	<b>350-318F</b>		3	4	5	6	7	8	9	10
Elbow 12mm push-fit	<b>350-130F</b>		1	1	1	1	1	1	1	1
Gun complete	<b>VS/26</b>		3	4	5	6	7	8	9	10
8mm dropper coil	<b>VS4</b>		3	4	5	6	7	8	9	10
Number of dropper guns		0	3	4	5	6	7	8	9	10

## SUPASPRAY SPARES AND ACCESSORIES

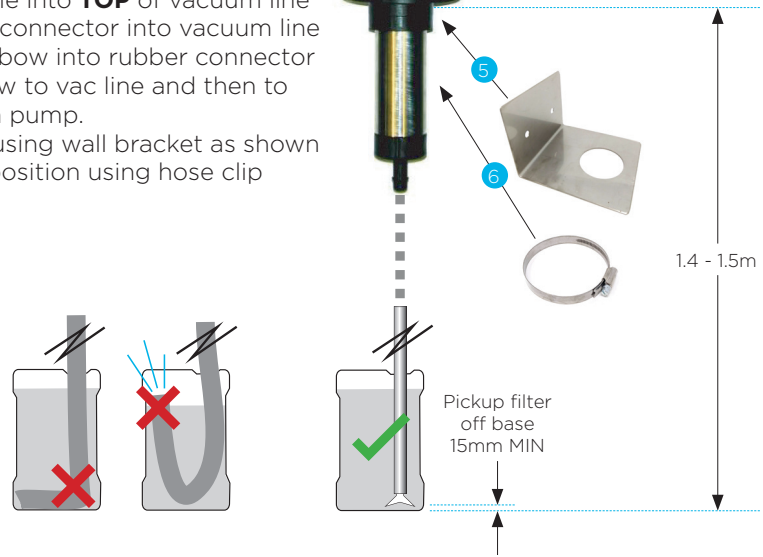
Part no.	Description		Part no.	Description	
<b>Supa 12</b>	Supaspray pump kit 12mm		<b>350-315F</b>	Tap 12mm push-fit inline valve	
<b>Supa 11</b>	Bottom hose and filter assembly		<b>VS/22</b>	Cable ties	
<b>VS501</b>	Teat spray pump mounting kit		<b>FO129</b>	Tubing 12mm x 10m blue	
<b>CF63</b>	Hose clip 35-50mm All Stainless		<b>351-109</b>	Tubing 12mm x 40m blue	
<b>390-302</b>	Vacuum connection grommet		<b>VS/26</b>	Teat spray gun complete 12mm	
<b>350-319F</b>	Elbow 12mm push-fit x 12mm stem		<b>VS/4</b>	8mm dropper coil	
<b>350-317F</b>	Connector 12mm push-fit x 12mm push-fit		<b>350-318F</b>	Tee 12mm push-fit x 12mm push-fit	
<b>350-120F</b>	Connector 12mm push-fit x 8mm push-fit		<b>350-130F</b>	Elbow 12mm push-fit x 12mm push-fit	

# SUPASPRAY VACUUM OPERATED PUMP - INSTALLATION

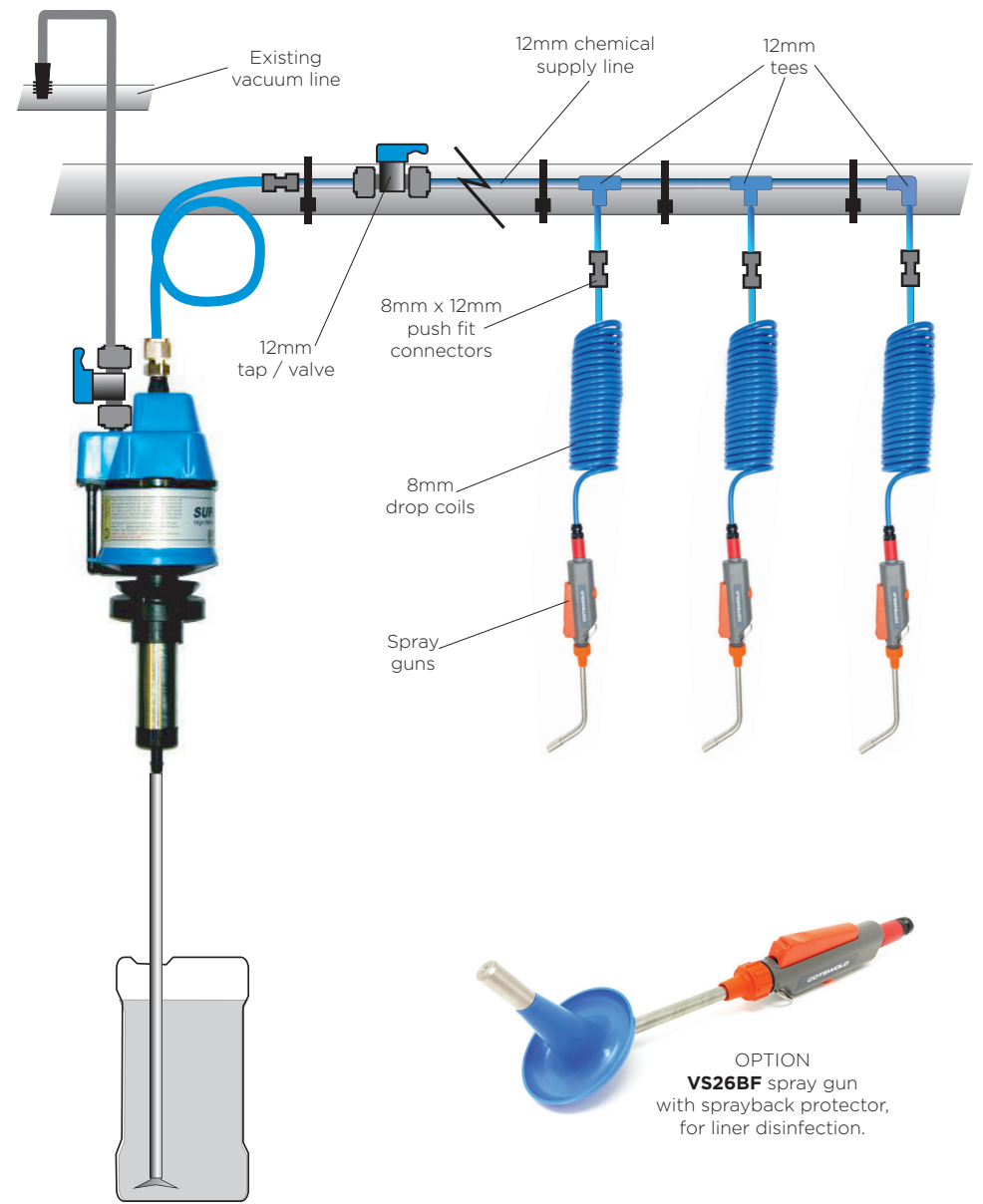


## VACUUM SUPPLY TO PUMP

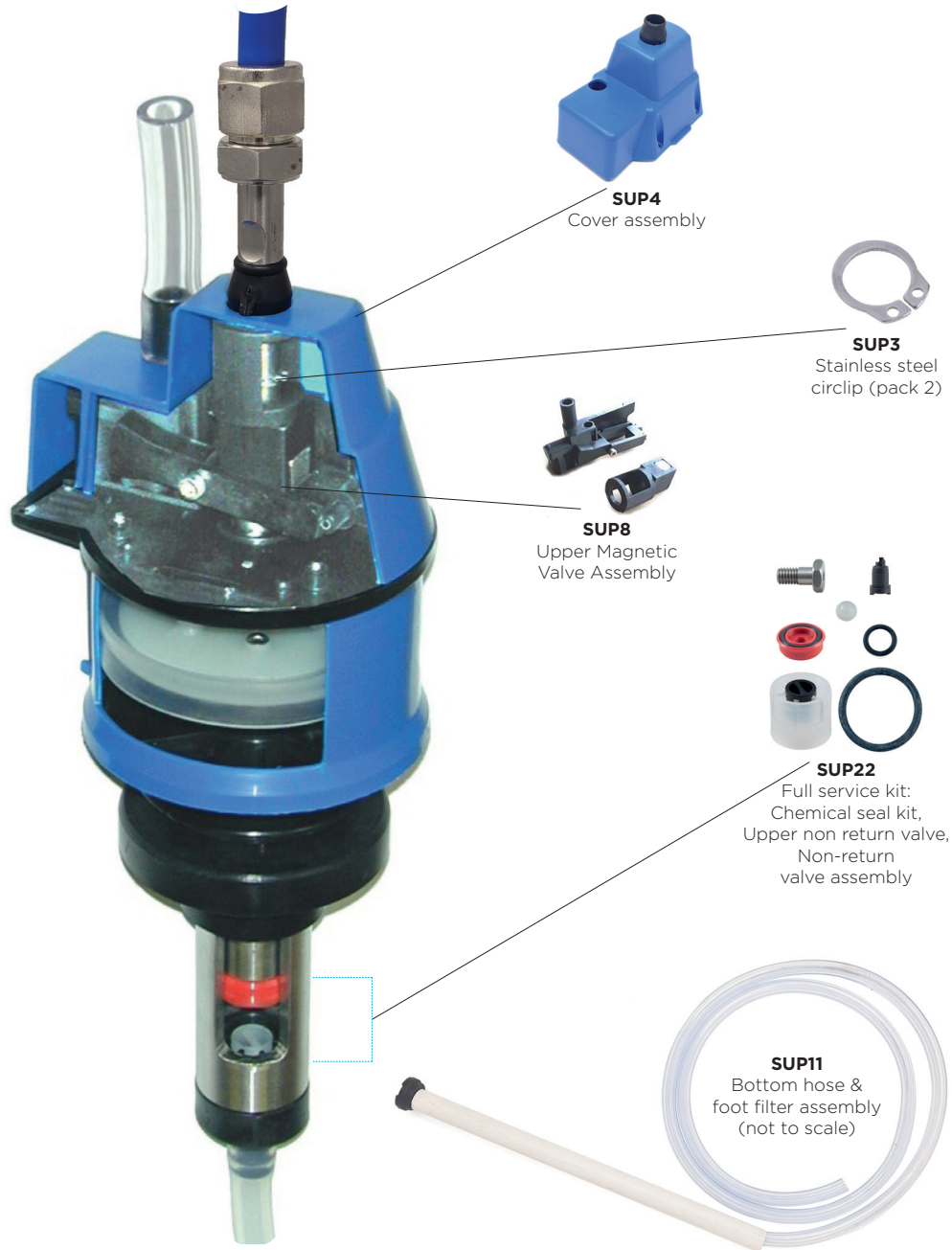
- 1 Drill 14mm hole into **TOP** of vacuum line
- 2 Insert rubber connector into vacuum line
- 3 Insert stem elbow into rubber connector
- 4 Connect elbow to vac line and then to tap / valve on pump.
- 5 Install pump using wall bracket as shown
- 6 Fix pump in position using hose clip



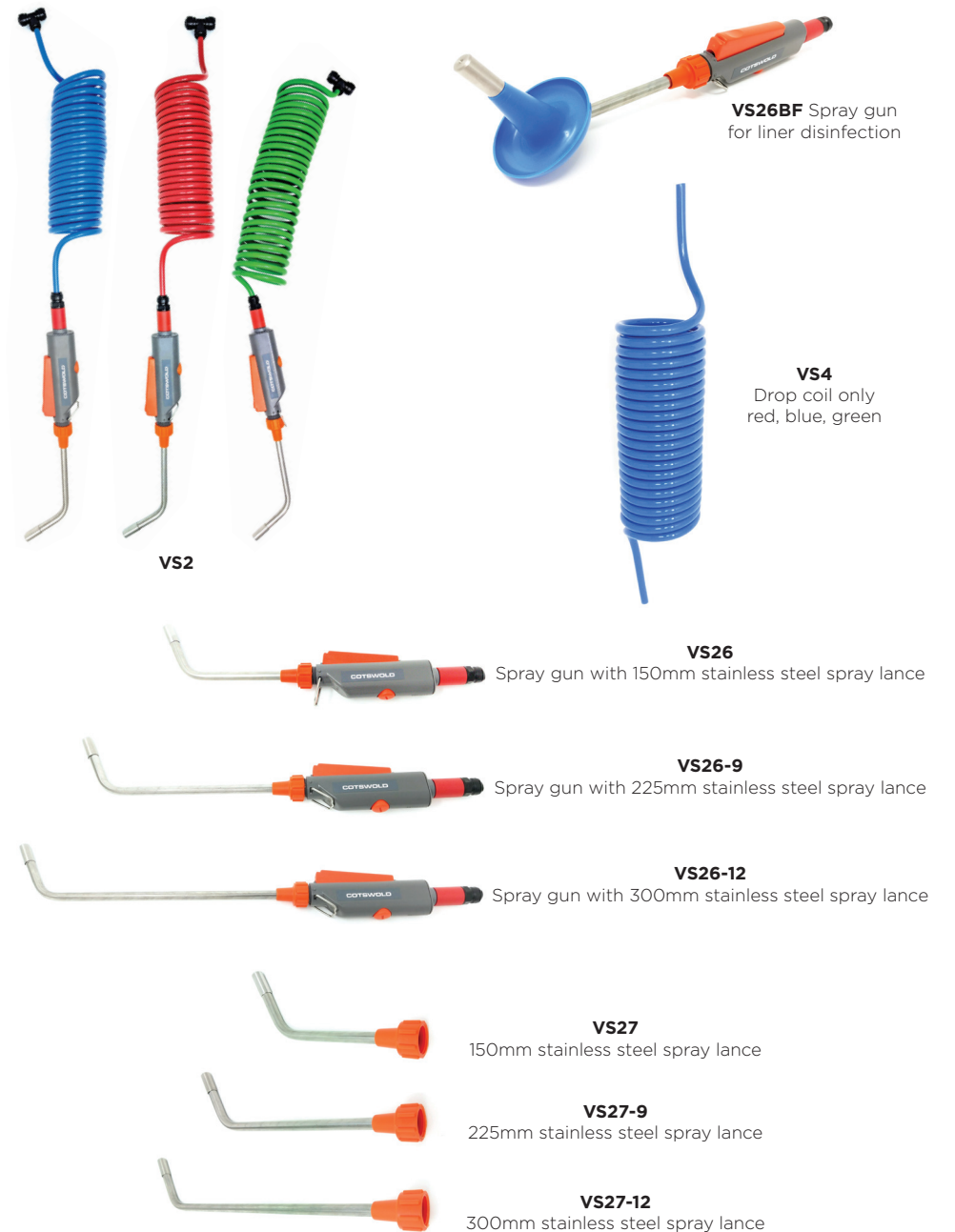
# SUPASPRAY SYSTEM - INSTALLATION



## SUPASPRAY PUMP REPLACEMENT PARTS



## SUPASPRAY ACCESSORIES



# SUPASPRAY FAST FAULT FINDER

Before you start,  
ensure that there is  
chemical in the drum!

## PROBLEM

## SOLUTION

The Pump Stops Moving	
Vacuum Supply may be blocked or restricted	Clear the blockage, ensure vacuum tube is at least 10mm inside diameter (larger for long runs)
The Magnetic Switch may be dirty or has failed	Clean the magnets or replace the mechanism (Sup 8). Always use a new circlip (Sup 3).
The Circlip may be broken	Replace Circlip (Sup 3)
The Vacuum Piston may be sticking	Remove the "L" Tube at the side of the body, and spray lubricant (eg Vacuum Oil) into the vacuum cylinder. Then work the lubricant into the system by manually operating the pump a couple of times.
Pump is Moving but Not Spraying	
No chemical in the drum	Check the drum and if necessary re-fill it.
Filters Blocked	Clean the filters on the suck -up tube (top & bottom) and those in the spray guns.
Bottom non-return-valve faulty	Unscrew the hose-tail, clean or replace the ball valve.
Red piston seal may be damaged or worn	Replace the Red Piston Seal (Sup 2)
Suck-Up Tube may be restricted or blocked	Clear the tube or replace it (Sup 11). The suck -up tube may be kinked inside the drum.
Upper non-return-valve may be faulty	Unscrew the stainless screw from the end of the shaft – wash out or replace (Sup 2). Don't lose the little ball!
Spray Guns may be blocked	Check the filters in the spray guns – clean if necessary.
Guns Spitting and Foaming	
There may be air in the system	Hold the spray guns high and operate them until the air is gone. Check for leaks in the suck -up tube. Check and if necessary replace the red piston -seal (Sup 2)
The Suck-up tube may be restricted	Clear or replace the Suck-Up tube (Sup 11). Ensure the Suck-Up tube is not kinked or restricted in the chemical drum.
Red Piston Seal may be damaged or worn	Replace the Red Piston Seal (Sup 2).
Upper Non-Return-Valve may be faulty	Unscrew stainless piston from the end of the central shaft. Wash out or replace (Sup 2) Don't lose the ball!
May be a hole in Chemical Lift Tube	Replace lift-tube assembly (Sup 11).
Chemical in the Vacuum Line	
The Top Chemical Tube Connector may be loose	Tighten the chemical delivery tube connection at the top of the pump.
The Drum Collar has no drain holes	Unblock the drain holes in the chemical drum collar. If there are no holes in the collar, drill 3 x 3mm drain holes.

Visit [www.cotswold-dairy.co.uk/resources](http://www.cotswold-dairy.co.uk/resources) for manuals and servicing instructions

**COTSWOLD**  
Dairy Equipment Co Ltd

Cotswold Dairy Equipment Co Ltd • Avenue 3 Station Lane • Witney • Oxford • OX28 4BP • UK  
Tel: +44 (0)1993 774567 • Email: [sales@cotswold-dairy.co.uk](mailto:sales@cotswold-dairy.co.uk) • Website: [cotswold-dairy.co.uk](http://cotswold-dairy.co.uk)